

WHY WE NEED A STRONG STORMWATER PERMIT



Heal the Bay



Rainfall becomes polluted stormwater runoff.
Illustration by NCDENR.

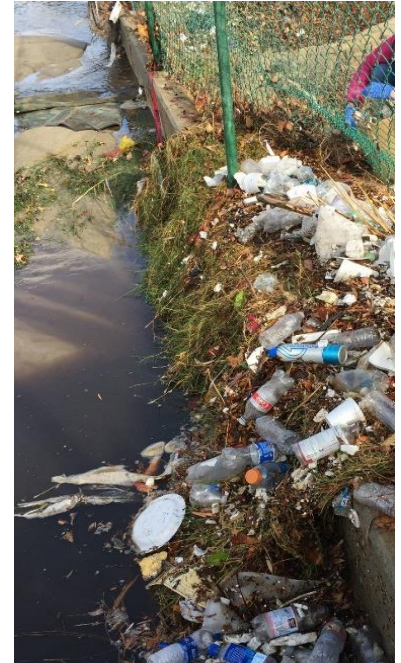
STORMWATER POLLUTION

Stormwater flows over paved areas, into our storm sewer system, and out into our rivers, lakes, and ocean. It picks up physical and chemical pollutants along the way that have detrimental effects on public health and the environment.

THE MS4 PERMIT

The Municipal Separate Storm Sewer System (MS4) Permit regulates the release of polluted stormwater and dry weather runoff from city and county owned storm drains into our rivers, lakes, and ocean.

The first MS4 Permit for Los Angeles County was issued in 1990 to address stormwater pollution. 30 years later, 208 waterbodies in the Los Angeles Region remain polluted by trash, bacteria, metals, and other contaminants. Stormwater is still a major source of this pollution because the current MS4 Permit does not hold permittees accountable to their requirements to reduce the flow of polluted stormwater from their storm drains.



“First Flush” stormwater pollution in Santa Monica from November 2019.

TURNING STORMWATER FROM A POLLUTANT INTO A RESOURCE

The MS4 Permit is up for renewal in 2020, which provides an opportunity to advocate for a permit that is simple, measurable, enforceable, and accessible so that we can hold permittees accountable. This means clear requirements, measurable goals with transparent reporting, and enforceable deadlines so everyone can know what needs to be done and how quickly progress is being made towards achieving those goals.



SIMPLE



MEASURABLE

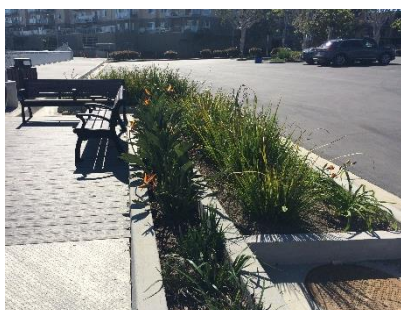


ENFORCEABLE



ACCESSIBLE

Local funding sources like the Safe, Clean Water Program (Measure W) aim to prioritize nature-based and multi-benefit stormwater capture projects like bioswales, regional projects, constructed wetlands, and rain gardens. Projects like these can address stormwater pollution while also providing additional investments in our communities. A strong MS4 Permit will hold permittees accountable to reduce their stormwater pollution by implementing these types of projects. This will ensure that we put these local funds to good use by investing in our communities and in our water future.



Parking Lot Retrofit
Bioswale



Oxford Basin
Regional Project



South Los Angeles
Wetlands Park



Residential Retrofit
Rain Garden